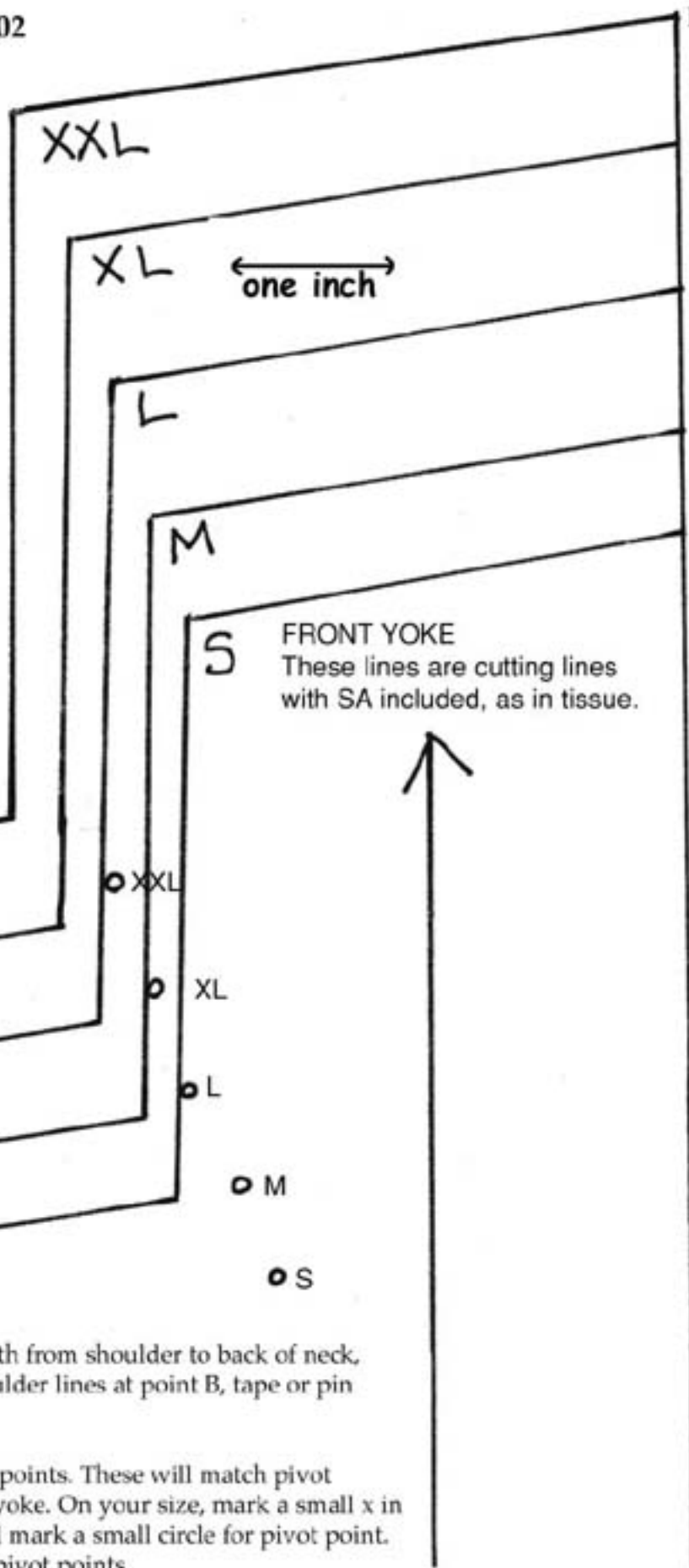


Ragfinders Jacket Revision 2002

With more than 2000 of these patterns sold, I have recieved a small handfull of complaints which have led to these revisions to correct minor errors in the neckline area.

The 1" scale mark is there to check scale if downloading pages from the web. If there is any distortion when printing from web, please adjust at photocopy shop or on your screen.

I have included ONLY the details which have changed. Please trace these corrections onto your tissue in sizes desired. Match up grain lines and all long straight edges which appear on your tissue.



• Front Yoke

The parts changed here are the length from shoulder to back of neck, and shoulder length. Match up shoulder lines at point B, tape or pin together and redraw onto tissue.

Add the small circles to mark pivot points. These will match pivot points you will draw on your back yoke. On your size, mark a small x in pencil where the 1/2" SA meets and mark a small circle for pivot point. When stitching neckline, match up pivot points.

XXL
← one inch →

XL

L

M

S

B

Ragfinders Jacket Revision

Front Yoke Shoulder

This is the right way up. Line this shoulder up with Front Yoke Neckline on page 1, at point B, so that shoulder line is one straight line. Tape pages together and trace changes in your size onto tissue.

Front Facing

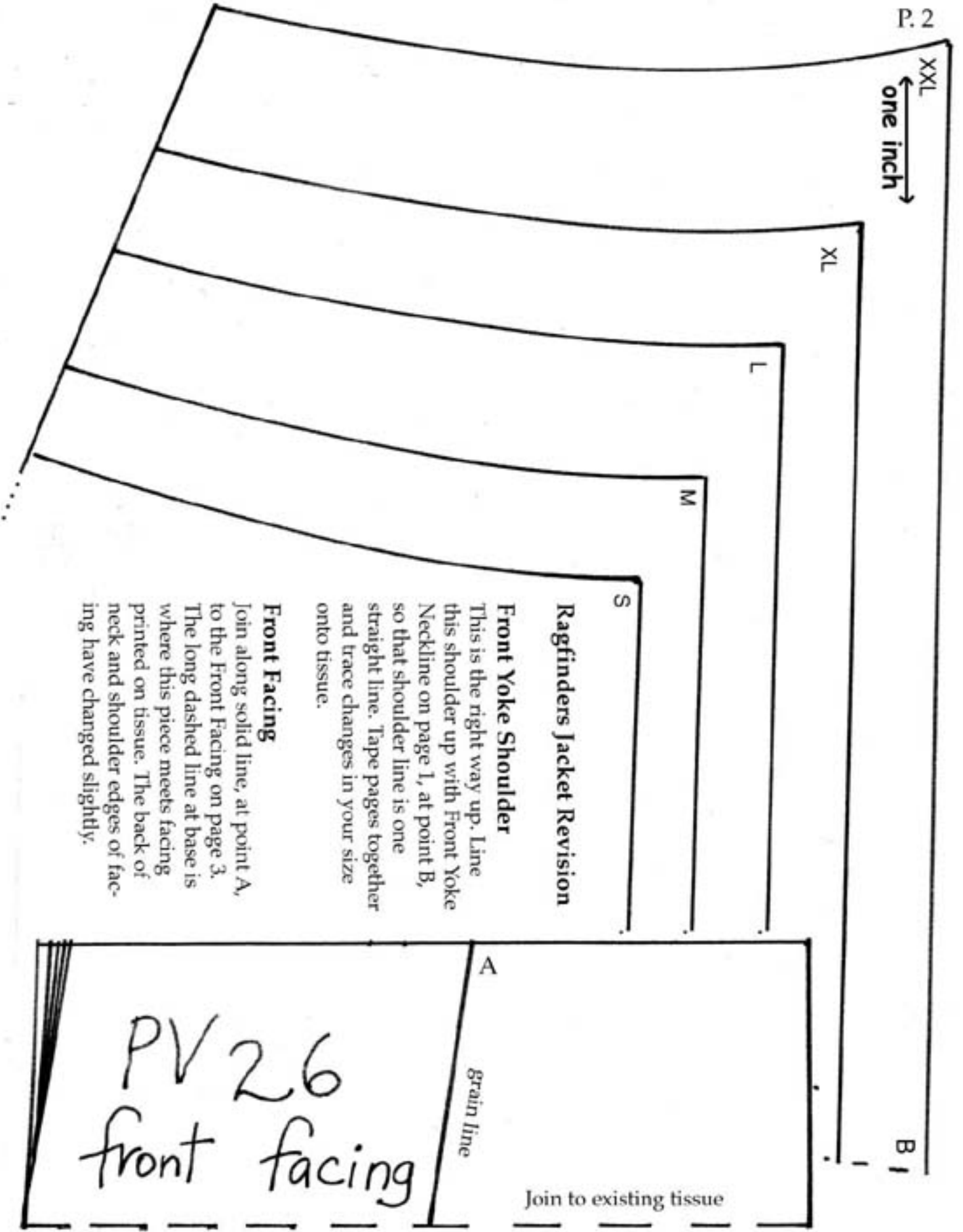
Join along solid line, at point A, to the Front Facing on page 3. The long dashed line at base is where this piece meets facing printed on tissue. The back of neck and shoulder edges of facing have changed slightly.

Join to existing tissue

A

Grain line

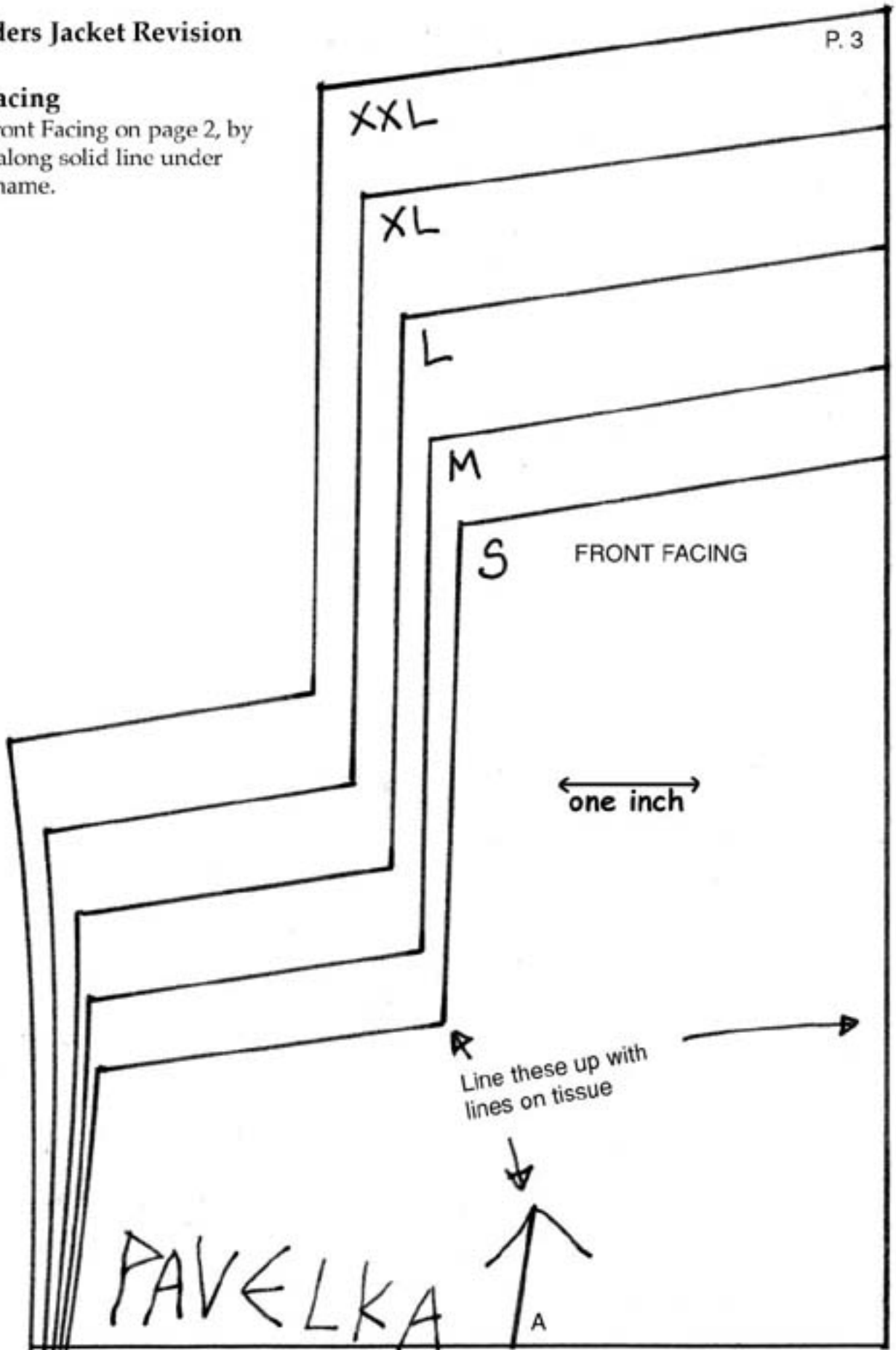
PV 26
front facing

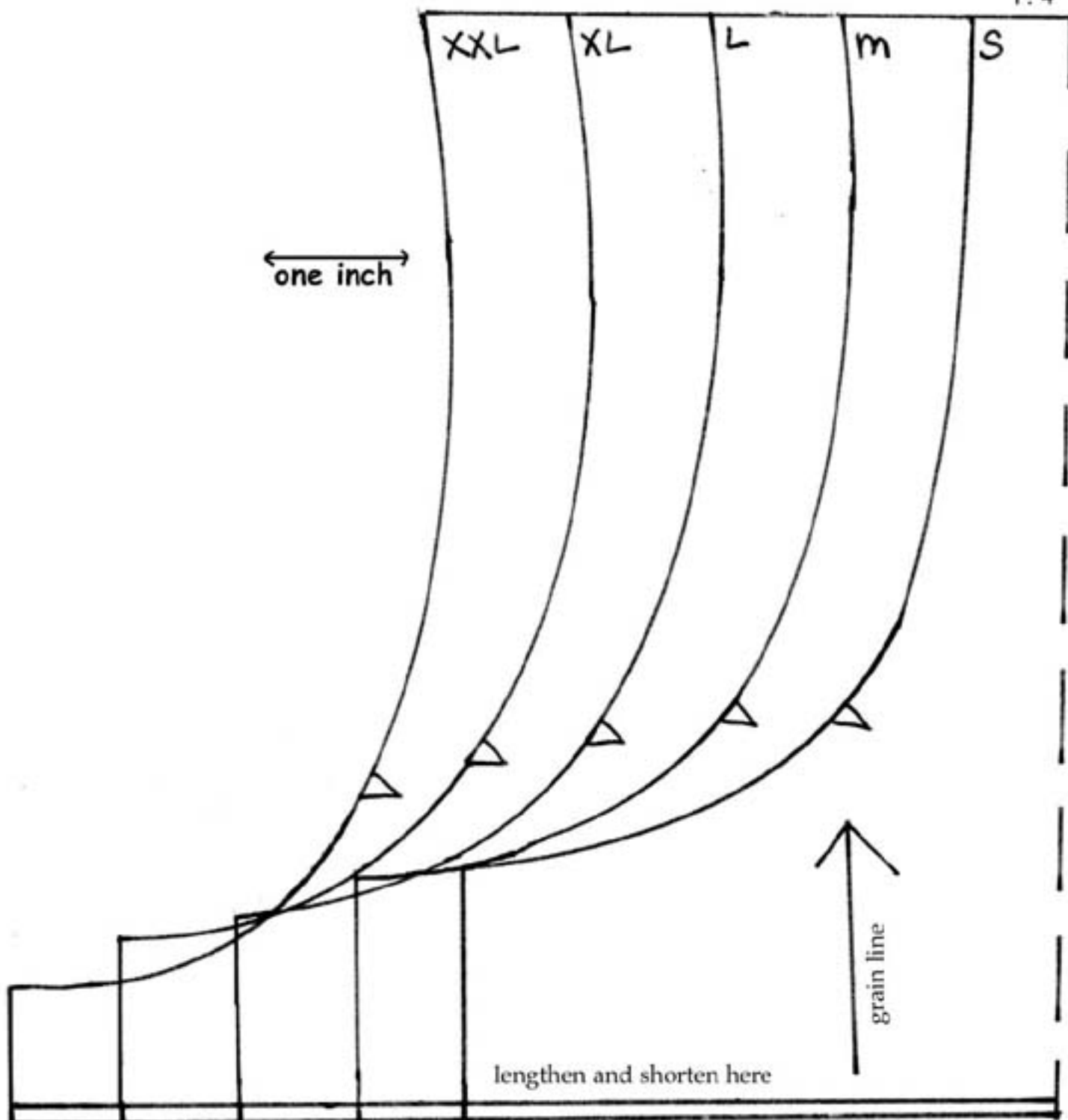


Ragfinders Jacket Revision

Front Facing

Join to Front Facing on page 2, by point A, along solid line under Pavelka name.





Ragfinders Jacket Revision 2002

JACKET FRONT ARMHOLE AREA

The armhole has changed slightly to meet the altered Front Yoke. Trace the new lines onto your tissue in your size. This joins to tissue along the "lengthen and shorten here" double lines, and the long vertical dashed line which represents a piecing line.